

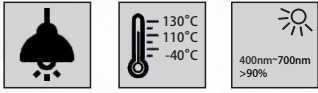
### Features & Application

- ◆ High lighting efficiency
- ◆ Optimized for uniform effects
- ◆ Narrow Beam Lens
- ◆ Stadium Lighting
- ◆ Surgical Light / Medical Light
- ◆ Security Lighting
- ◆ Industrial Light / Commercial
- ◆ Table and Floor Lamps
- ◆ **Indoor Architectural & General Lighting**
- ◆ Spot Lighting and Projectors
- ◆ Glare Free
- ◆ Facade Lighting
- ◆ Indoor Recessed Fixtures
- ◆ Office Lighting
- ◆ Indoor and Outdoor Lighting
- ◆ Perfect uniform flux
- ◆ Soft wide beam with good illuminance uniformity
- ◆ Easy fixing system to the PCB
- ◆ Complying with UL94 Specifications
- ◆ UV protected
- ◆ Easy fixing onto the PCB: 3 Pins provided for precise and robust mounting

# Table of Contents

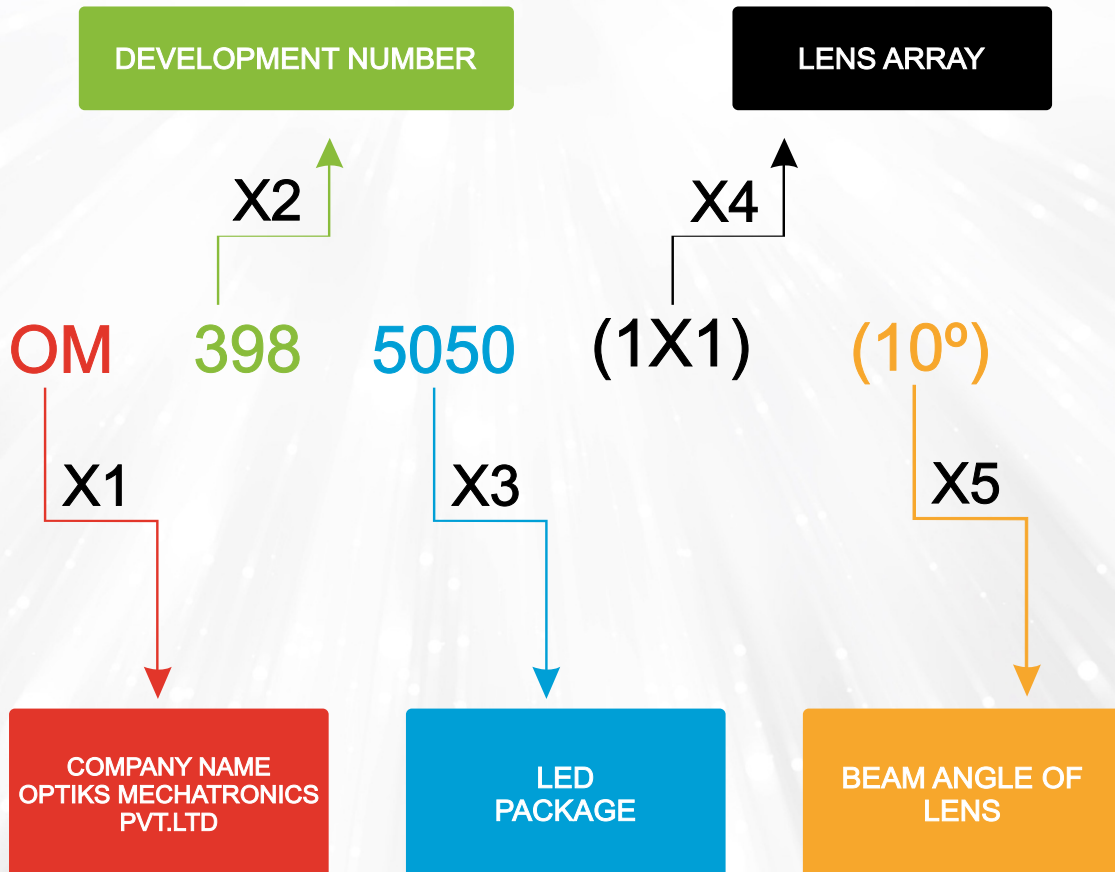
- ◆ General information & Product Nomenclature.....P.2
- ◆ Material specification .....P.3
- ◆ Optical specification .....P.3
- ◆ Mechanical specification .....P.4

## GENERAL INFORMATION



- ◆ Narrow Beam Light Application.
- ◆ Operating Temperature range -40°C ~+110°C (upper limit +130°C)
- ◆ Storage Temperature range -40°C~+110°C (upper limit +130°C)
- ◆ Average transmittance in visible spectrum 400nm~700nm>90%

## PRODUCT NOMENCLATURE



## MATERIAL SPECIFICATION

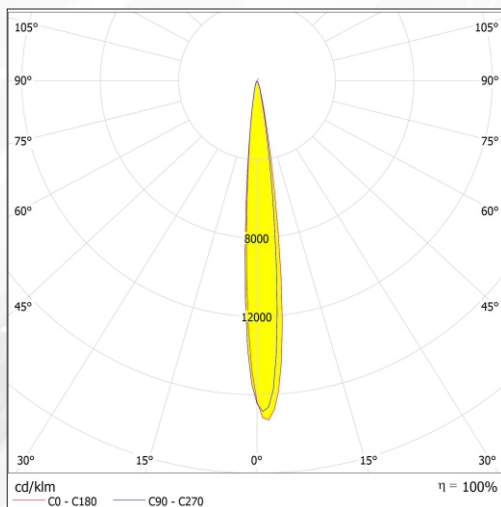


- ◆ Lens Material : Optical Grade PC (Bayer 2407)
- ◆ Luminous transmittance : 89 to 90% (ISO 13468-2/ASTM D1003)
- ◆ Refractive index : 1.584 (ISO 489/ASTM D542)
- ◆ Flammability : HB/V-0 (UI94)
- ◆ Clean spot, efficiency : 89%
- ◆ Colour : Clear

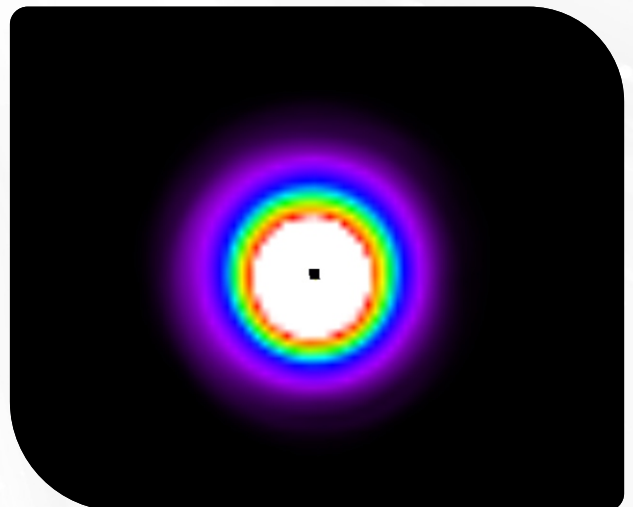
## OPTICAL SPECIFICATION

Note: (1) All the results of analysis are based on 0 degrees of elevation.  
(2) Tolerance:  $\pm 10\%$ .

### Beam Angle



### Beam Pattern



## MECHANICAL SPECIFICATION

### FASTENING

Glue

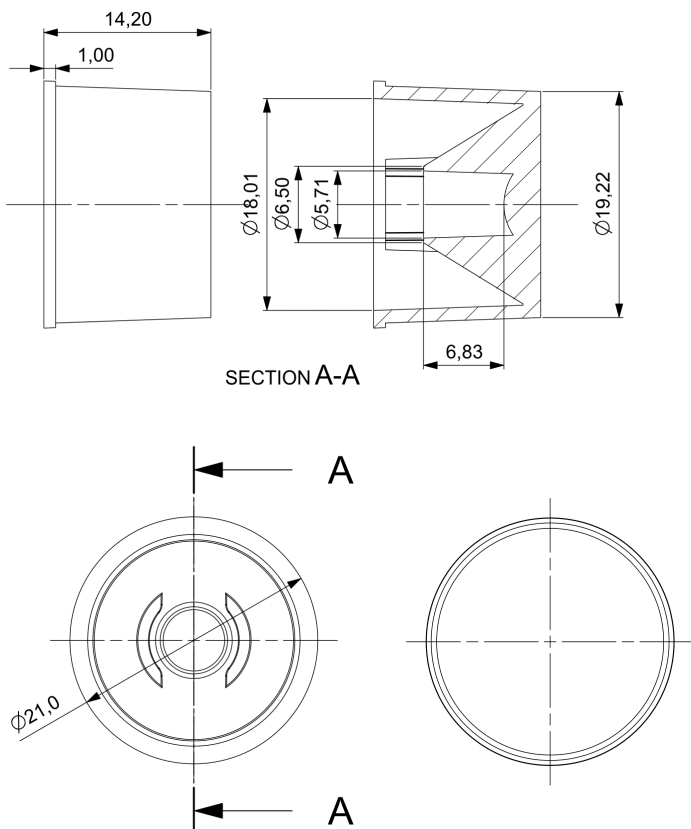
Screw

Tape

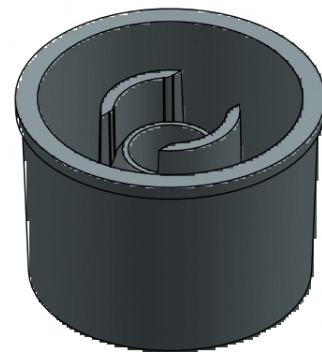
Fixing-ring

Frame

### LENS DIMENSION



### LED+LENS ASSEMBLY INSTRUCTION



### USAGE AND MAINTENANCE



1. If necessary, clean lenses with mild soap, water and soft cloth.
2. Never use any commercial cleaning solvents on lenses, like alcohol.
3. Please handle or install lenses with wearing gloves, skin oils may damage lens or its optical characteristic.